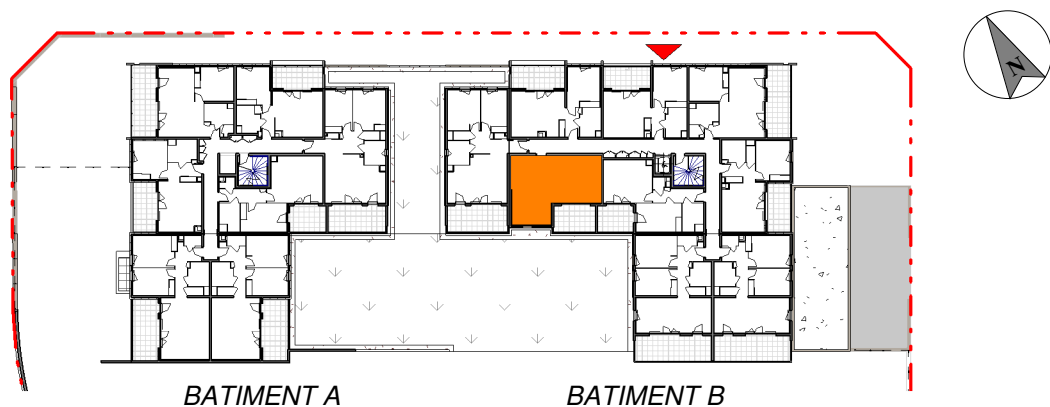


R+1 P2 B101 BATIMENT B



67, avenue Jean Jaurès
30 900 NIMES



56, avenue Jean Jaurès
30 900 NIMES



546, rue Etienne Lenoir
30900 NIMES

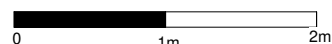
Cuis/Séjour	21.9 m ²
Entrée	5.7 m ²
Chambre	13.3 m ²
SDE	5.3 m ²
WC	1.6 m ²

47.8 m²

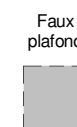
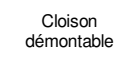
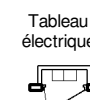
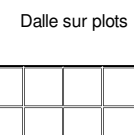
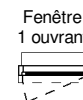
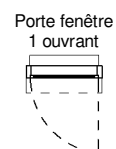
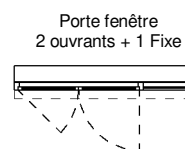
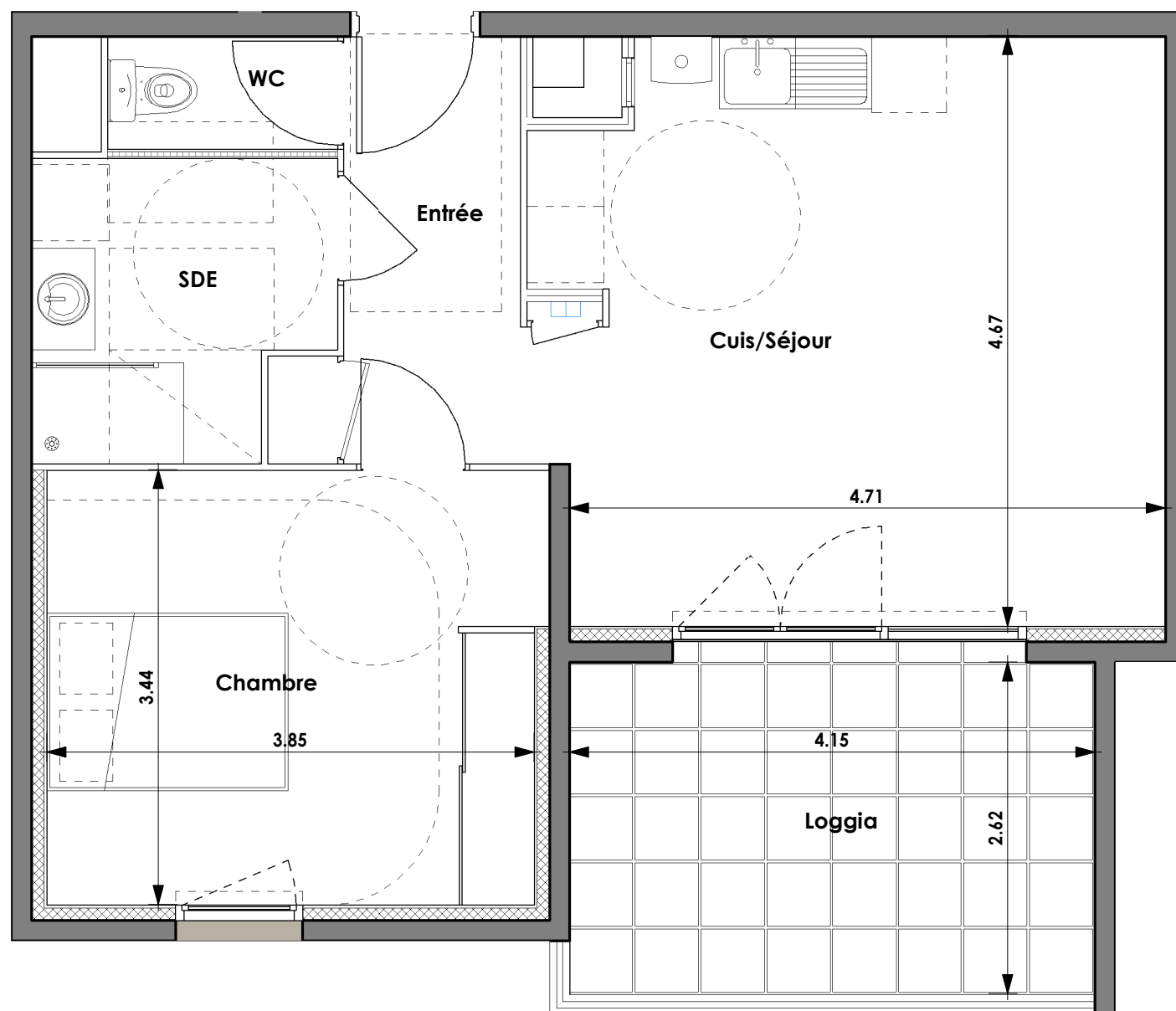
Loggia	10.9 m ²
--------	---------------------

10.9 m²

Echelle graphique 1/50



13/05/2020



Des modifications sont susceptibles d'être apportées à ce plan en fonction des contraintes techniques ou réglementaires de la construction, tant en ce qui concerne les dimensions libres que l'équipement. Les retombées, faux-plafonds, soffites, ainsi que l'emplacement des équipements sont figurés à titre indicatif.